

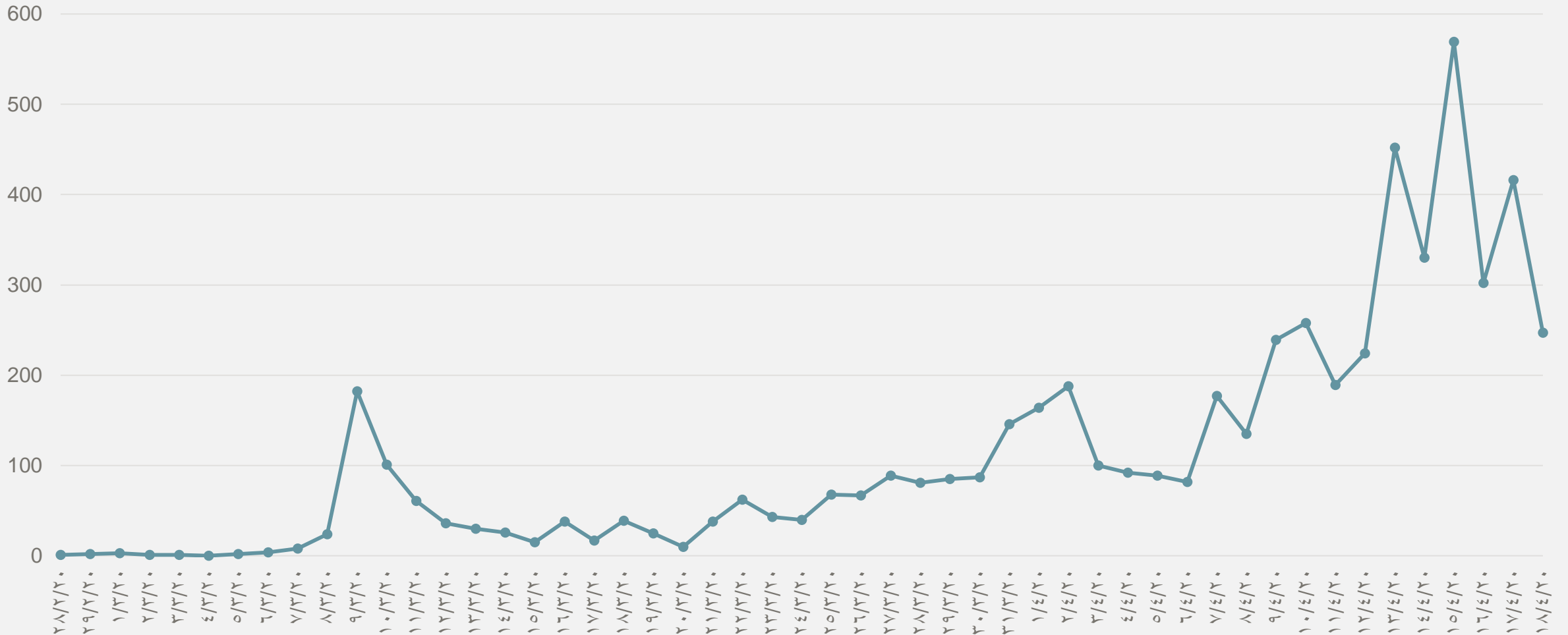


اللجنة العليا لإدارة الأزمات

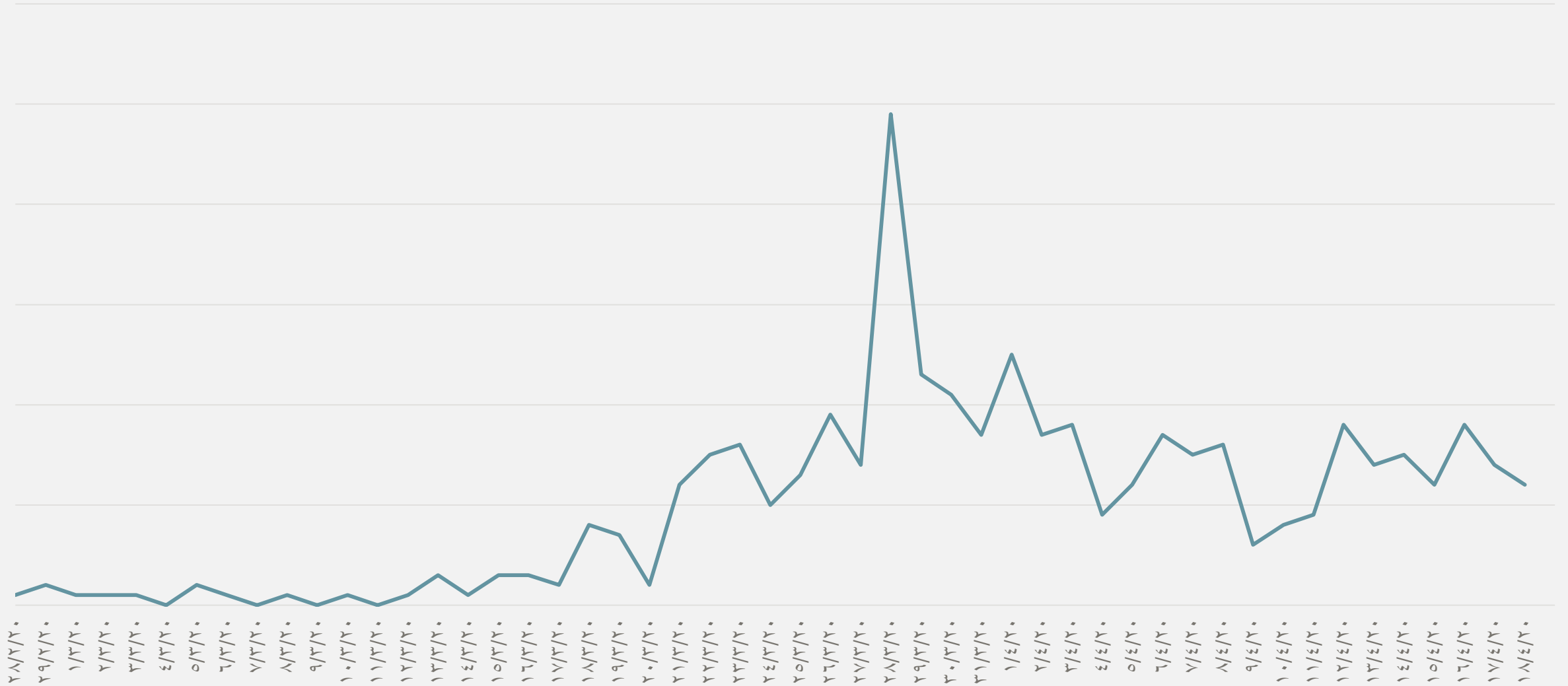
Supreme Committee for Crisis Management

Positive cases of COVID-19 based on scan date (5,685 cases)

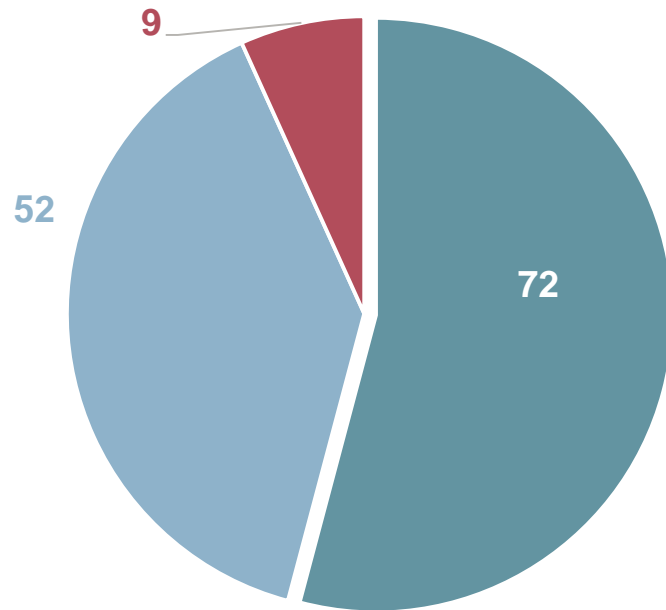
(Until 6am, 19.4.2020)



Curve showing Qataris diagnosed with COVID-19 since 28 February

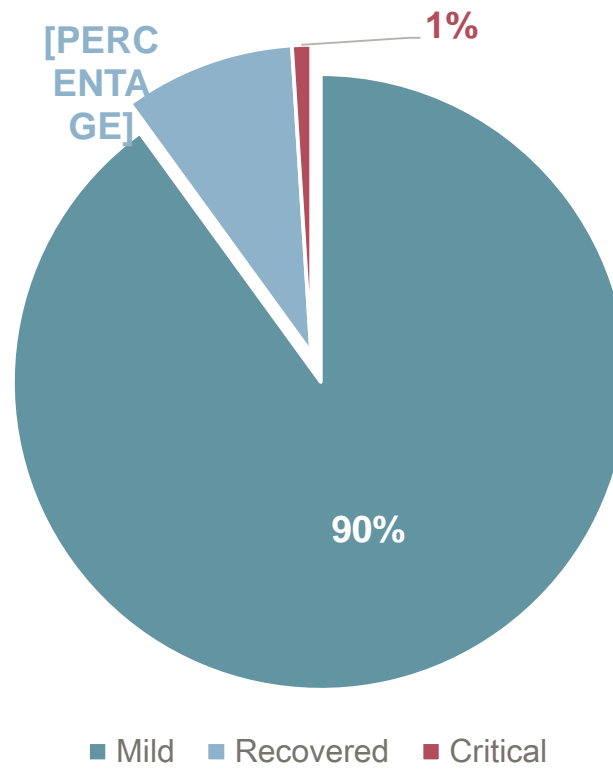


Cases in intensive care (#)



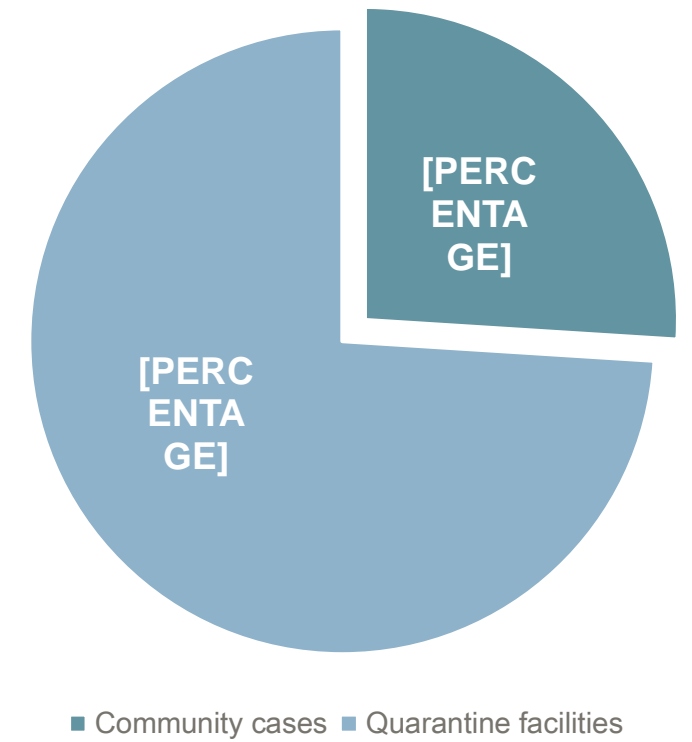
- # of cases in intensive care
- Discharged from intensive care

Severity of cases



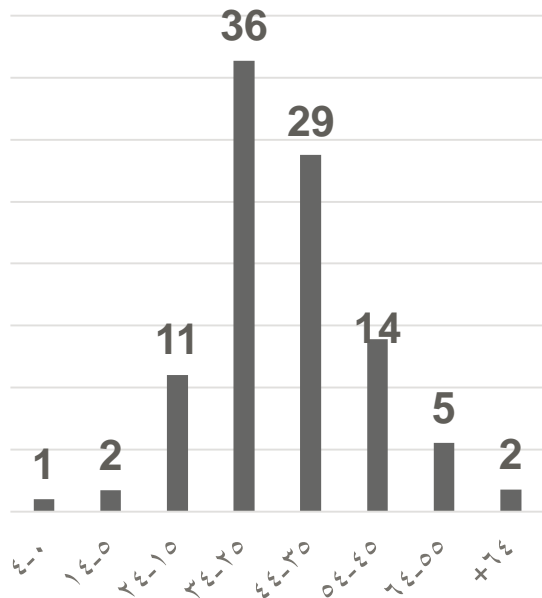
- Mild
- Recovered
- Critical

Infection rate based on location

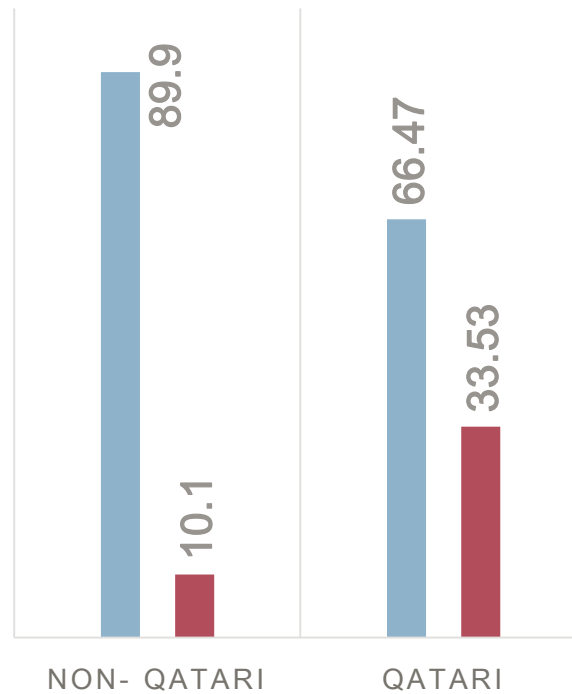


- Community cases
- Quarantine facilities

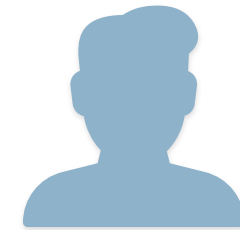
Cases with COVID-19



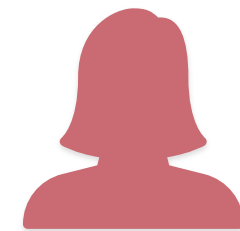
Age (%)



Nationality (%)



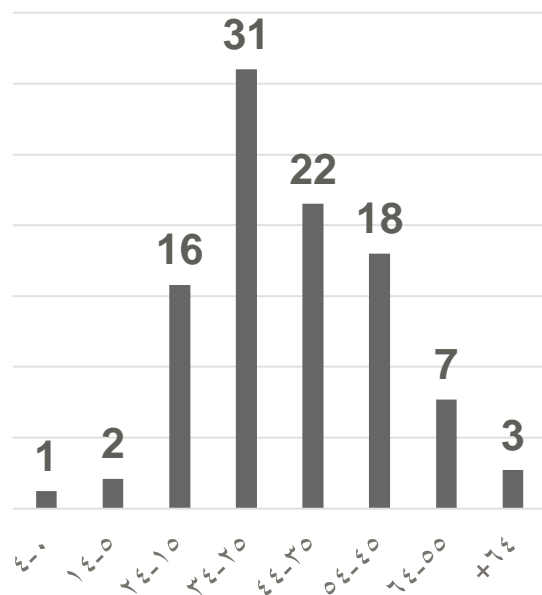
Males 89%



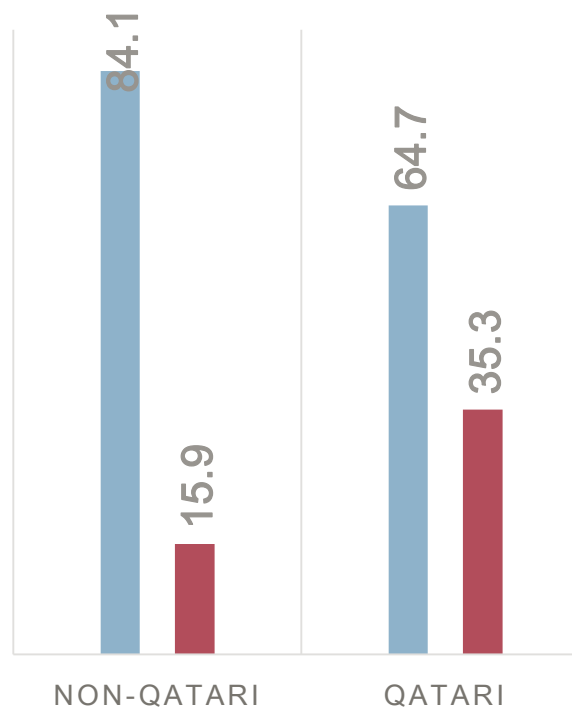
Females 11%

Gender

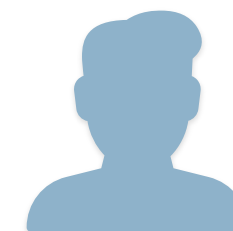
Recovered cases



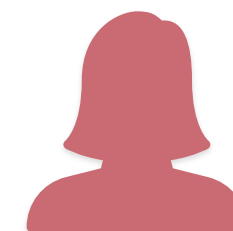
Age (%)



Nationality (%)



Males 80%



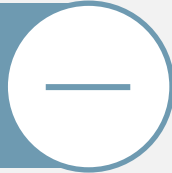
Females 20%

Gender

The ability of the healthcare system to deal with cases



Number of deaths



Number of mild cases



Testing methodology



Cases identified in quarantine

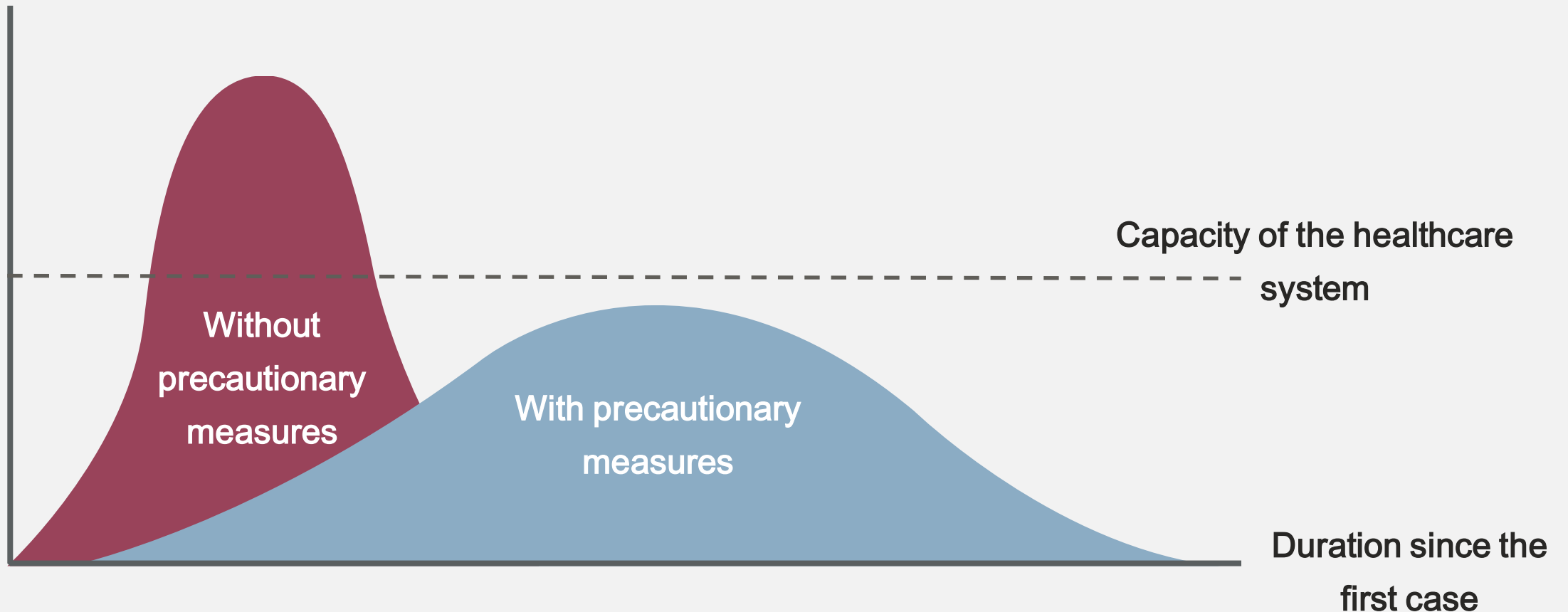


How we interpret facts And what they indicate

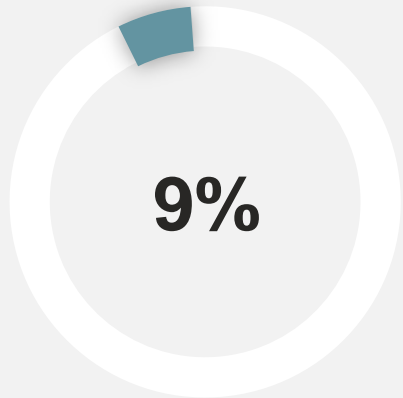
The ability of the healthcare system to deal with cases

One of the important indicators that should be emphasized is the ability of the healthcare system to deal with cases. We must remember the situation in many developed countries that are no longer capable of keeping up with cases.

Number of cases

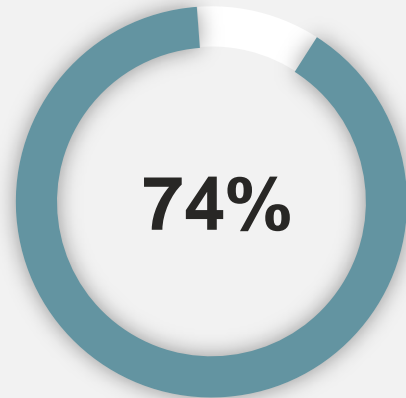


The ability of the healthcare system to deal with cases



Recovery rate

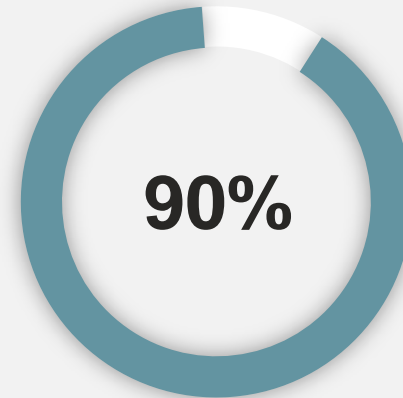
Infection duration
and cycle



Cases identified in
quarantine



Testing
methodology



Mild cases



Deaths (#)

Testing methodology





اللجنة العليا لإدارة الأزمات

Supreme Committee for Crisis Management